

FLASHMODEL

Tanguy Blondiaux



HEIGHT: 1.87 **SHOES:** 45 **BODY SIZE:** 90/73/92 **HAIR:** Light Brown **SIZE:** 48 **EYES:** Green

FLASHMODEL



HEIGHT: 1.87 **SHOES:** 45 **BODY SIZE:** 90/73/92 **HAIR:** Light Brown **SIZE:** 48 **EYES:** Green

FLASHMODEL

Elegante, casual,
sportivo: una
stagione di stile
classico, con
personalità. Otto
modelli, quattro
generazioni.
Lo stile non ha età

foto Andrea Gandini
styling Mauro Biasiotto

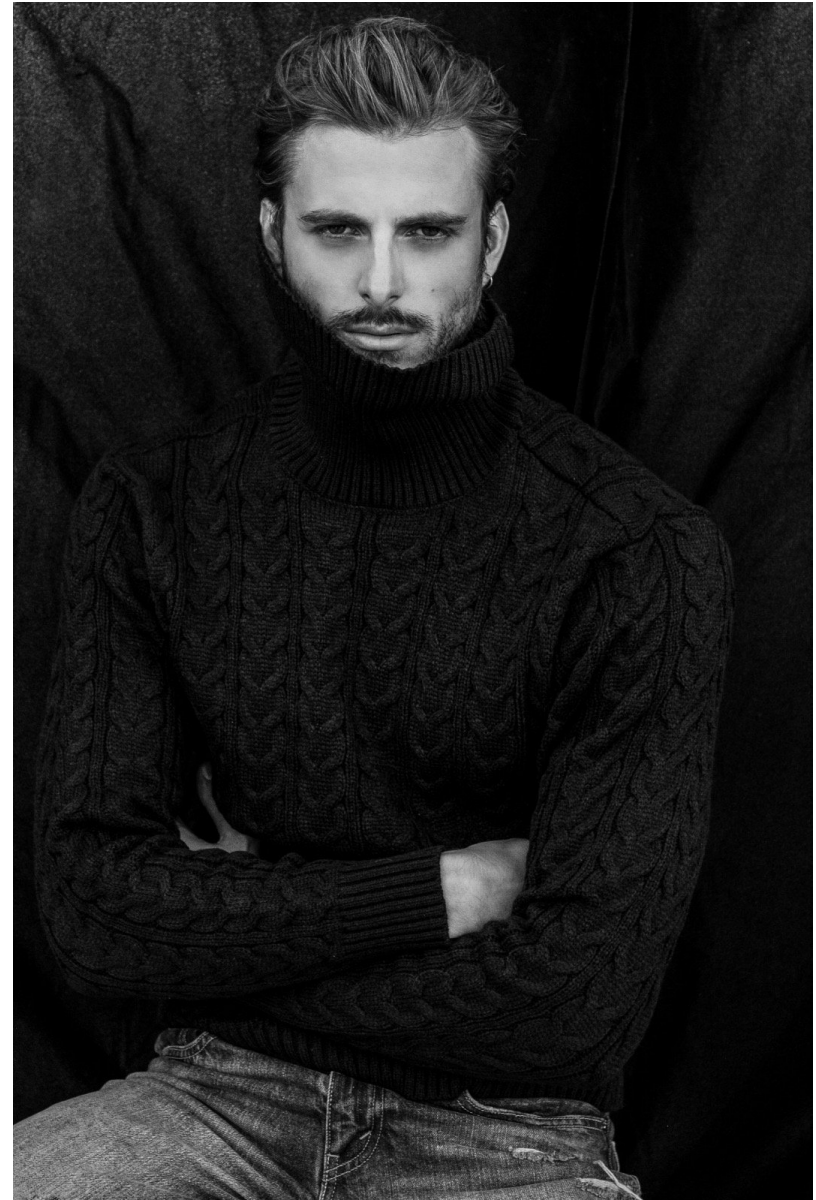
L'uomo
che
verrà

61



HEIGHT: 1.87 **SHOES:** 45 **BODY SIZE:** 90/73/92 **HAIR:** Light Brown **SIZE:** 48 **EYES:** Green

FLASHMODEL



HEIGHT: 1.87 **SHOES:** 45 **BODY SIZE:** 90/73/92 **HAIR:** Light Brown **SIZE:** 48 **EYES:** Green

FLASHMODEL



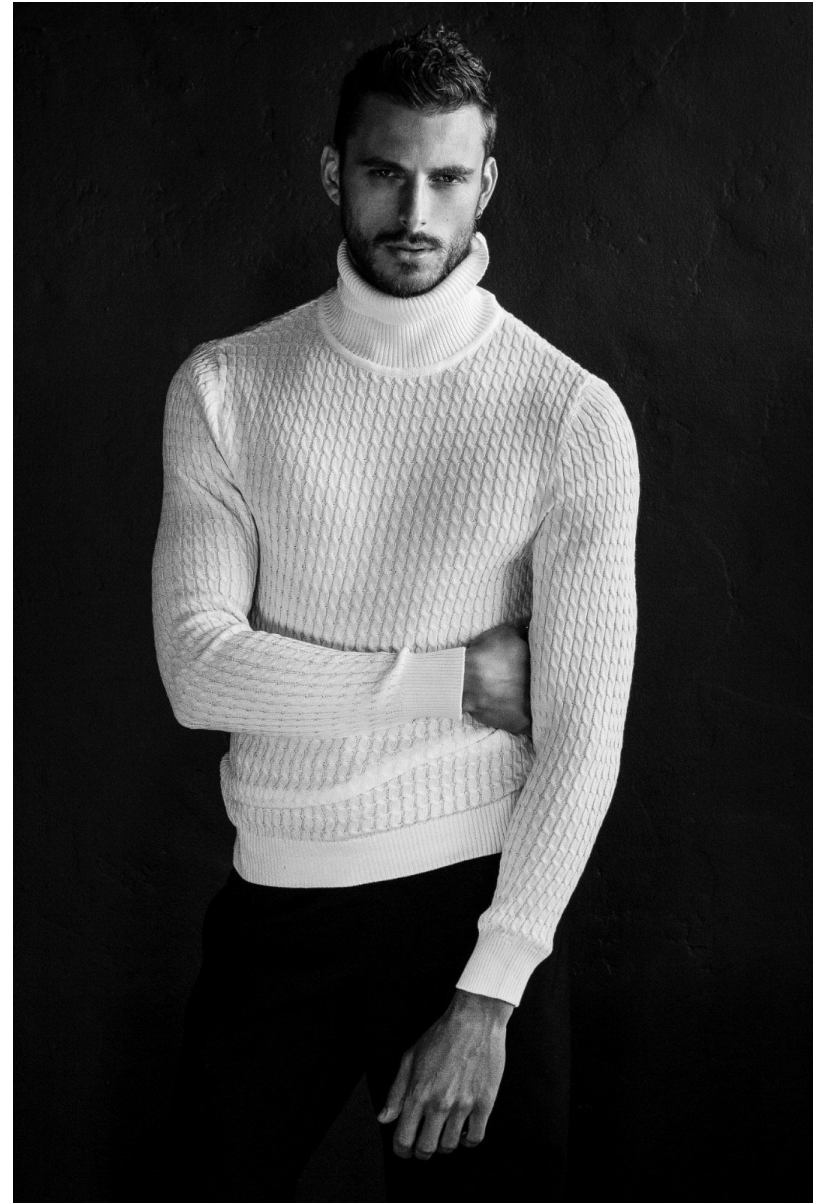
HEIGHT: 1.87 **SHOES:** 45 **BODY SIZE:** 90/73/92 **HAIR:** Light Brown **SIZE:** 48 **EYES:** Green

FLASHMODEL



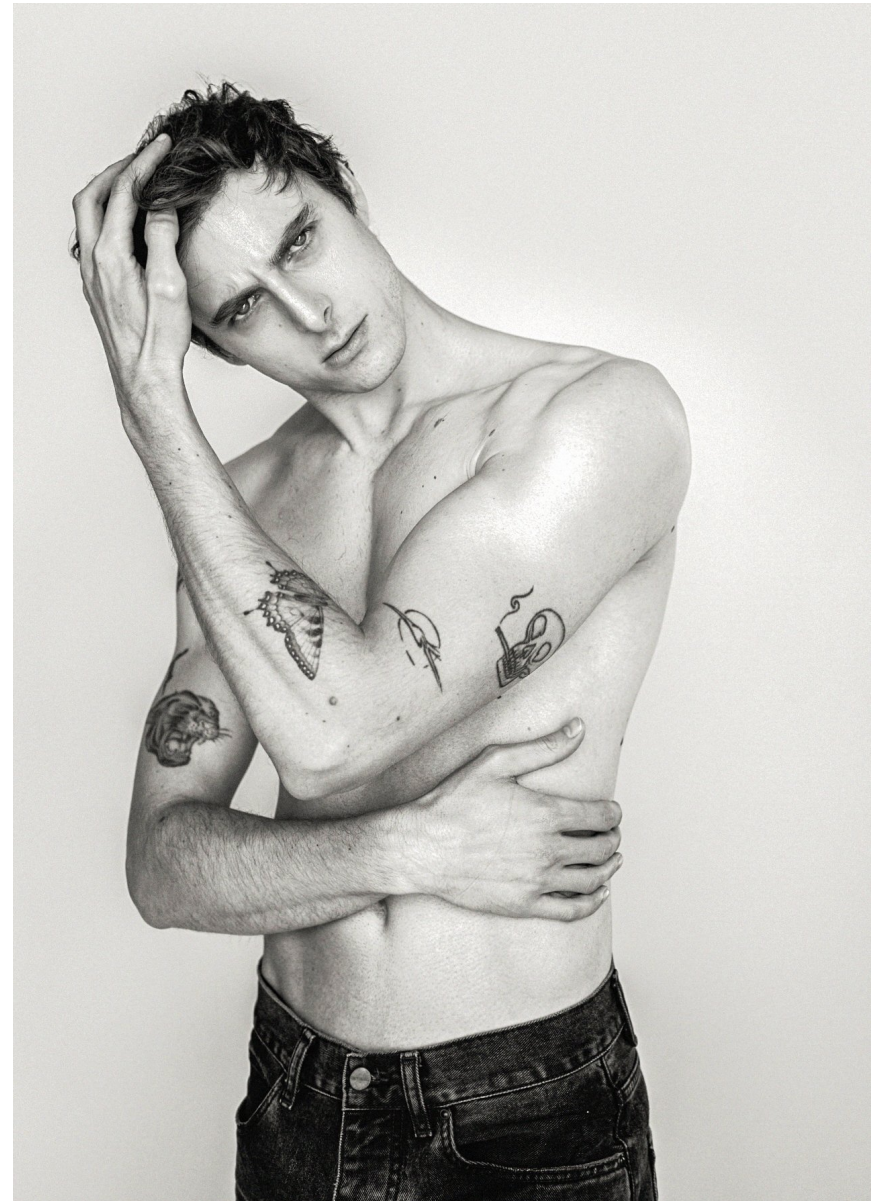
HEIGHT: 1.87 **SHOES:** 45 **BODY SIZE:** 90/73/92 **HAIR:** Light Brown **SIZE:** 48 **EYES:** Green

FLASHMODEL



HEIGHT: 1.87 **SHOES:** 45 **BODY SIZE:** 90/73/92 **HAIR:** Light Brown **SIZE:** 48 **EYES:** Green

FLASHMODEL



HEIGHT: 1.87 **SHOES:** 45 **BODY SIZE:** 90/73/92 **HAIR:** Light Brown **SIZE:** 48 **EYES:** Green

FLASHMODEL



HEIGHT: 1.87 **SHOES:** 45 **BODY SIZE:** 90/73/92 **HAIR:** Light Brown **SIZE:** 48 **EYES:** Green

